



# Local Roadway Safety Plan

Stakeholder Meeting #1

September 21, 2022

10:30 am





# Agenda

- Introductions
- What is a Local Road Safety Plan (LRSP?)
- LRSP Process
- Your Role as a Safety Champion
- Preliminary Collision Analysis Findings
- Project Website and Interactive Map Input Walk-Through
- Discussion
- Next Steps





# Introduction



# What is a Local Roadway Safety Plan (LRSP)?

## Overarching Goals:

- Systematically identify and analyze active transportation problems and recommend improvements
- Improve the safety of all road users by using proven effective countermeasures
- Coordinate with key Stakeholders to implement roadway safety improvements and response within Pico Rivera
- Continually leverage existing resources to secure additional funding for safety improvements
- Ensure that safety improvements are made in a manner that is fair and equitable for all Pico Rivera residents, especially disenfranchised communities

## Considers engineering and non-engineering strategies:

- 4 E's of Traffic Safety: **E**ducation, **E**nforcement, **E**ngineering and **E**mergency Medical Services (EMS)



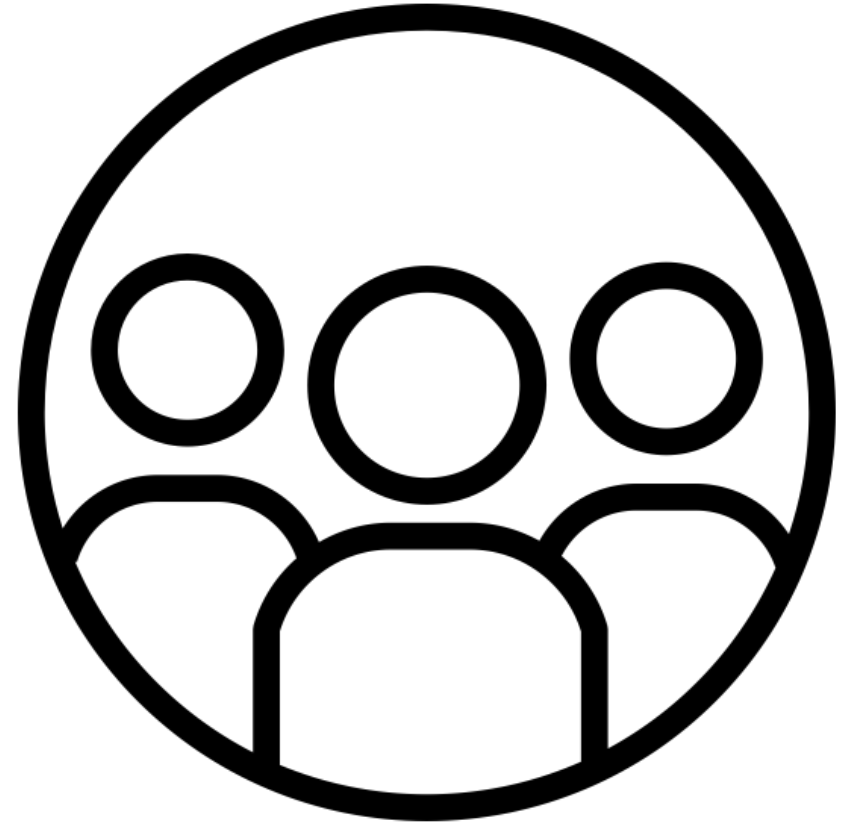
# LRSP Process

- Five-years of collision data (2017-2021) on local roadways, including non-freeway state routes (SR 164 non-freeway, SR 72)
- Collision analysis
  - Identification of collision trends: collision types, severity, violation category, lighting conditions, etc.
  - Geographic analysis: spatial identification of top trends
- Identification of high-injury intersections and mid-block (roadway segment) locations
- Identification of emphasis areas
- Identification of viable countermeasures and develop a countermeasure toolbox
- Develop safety projects for high-risk locations



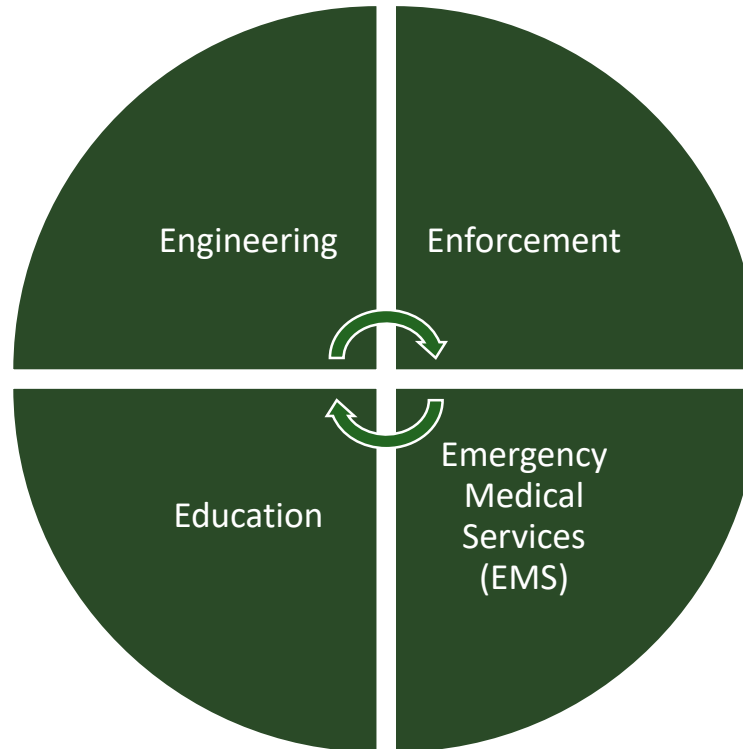
# Your Role as a Safety Champion!

- Comments on the presentation
- Tell us about your traffic safety related issues or concerns
- Tell us what you heard from the members of the community
- Help set the goals and objectives of the LRSP
- Share with us any ideas for programs/safety measures under the E categories (Education, Enforcement, Engineering and EMS)
- Report your concerns in a map-based survey at <https://www.pico-rivera.org/index.php/local-roadway-safety-plan/>
- Share the survey with everyone
- Stay informed about the project!



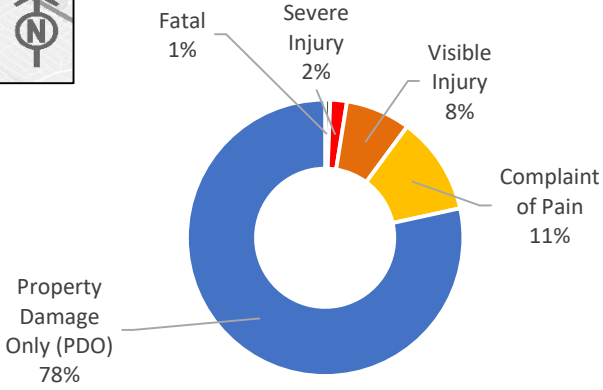
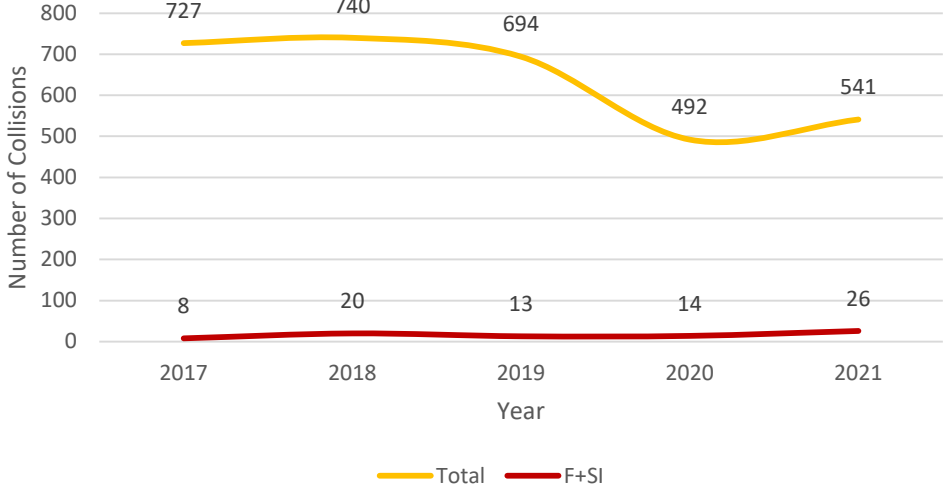
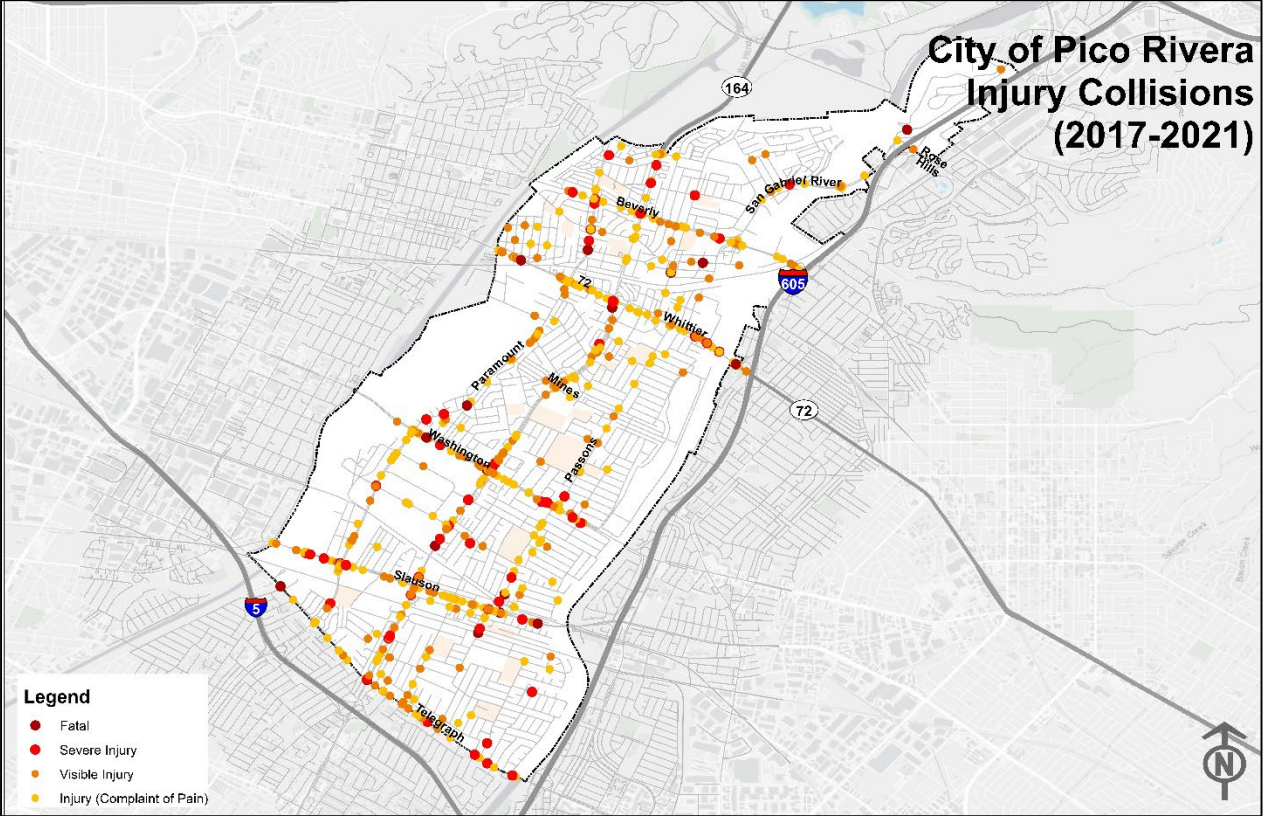
# The 4 E's of Traffic Safety

- HSIP eligible countermeasures
- E.g.: Improve intersection lighting, install median refuge island, install bulb outs, improving signs and striping
- Conduct focused public information and education campaigns
- Create pocket guides and informational fliers with pedestrian laws, stop sign violations, etc.
- Safe Routes to School education programs



- Targeted enforcement at high risk intersections and priority locations
- Place high priority on enforcement of violation type that contribute to the most fatalities and severe injuries
- Improve deployment to collision sites
- Ensure emergency routes are defined and clear

# Collision Analysis Findings

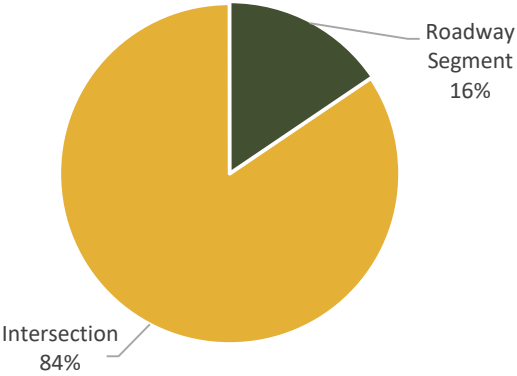


- 3,194 collisions between 2017-2021
- 2,505 property damage only (PDO collisions)
- 81 fatal and severe injury (F+SI/KSI collisions)

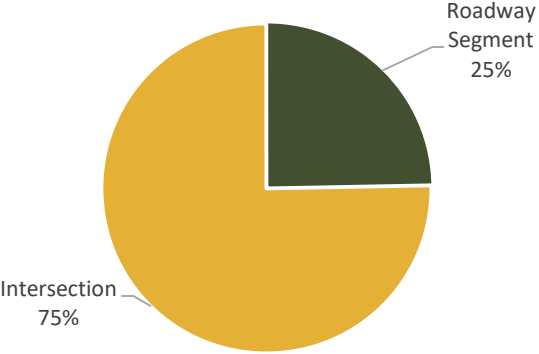


# Collision Analysis Findings

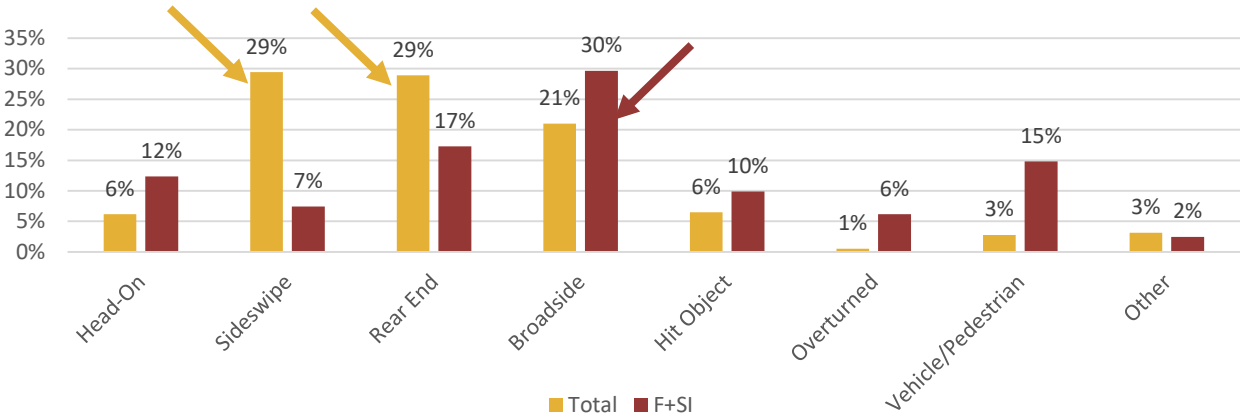
All Collisions



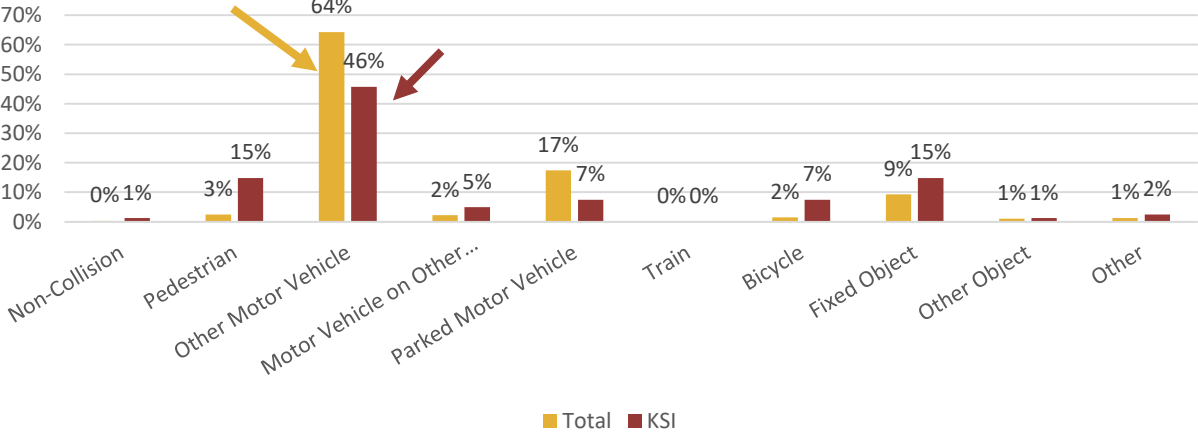
F+SI/KSI Collisions



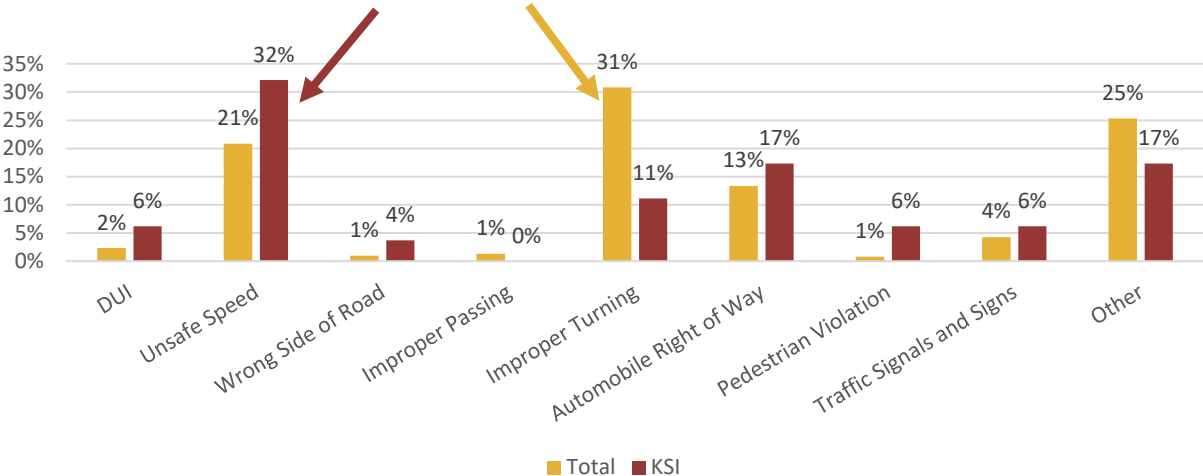
Collision Type



Collisions by Motor Vehicle Involved With

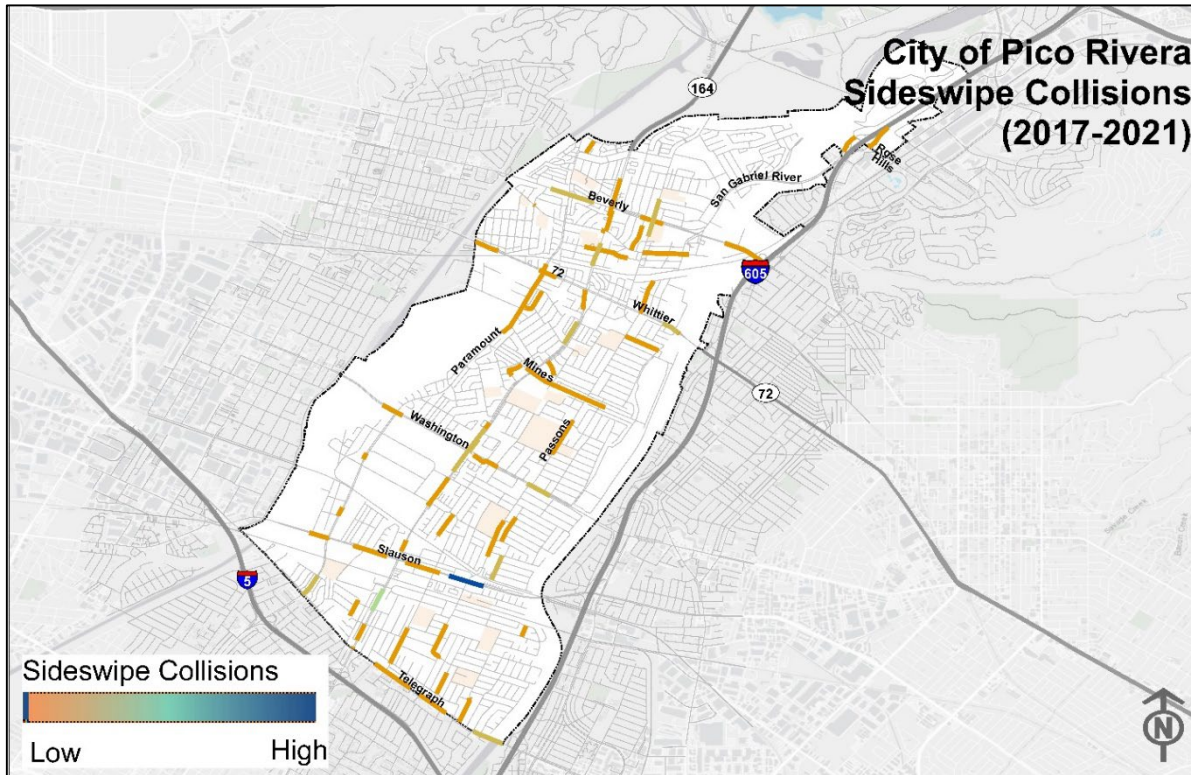


Primary Violation Categories

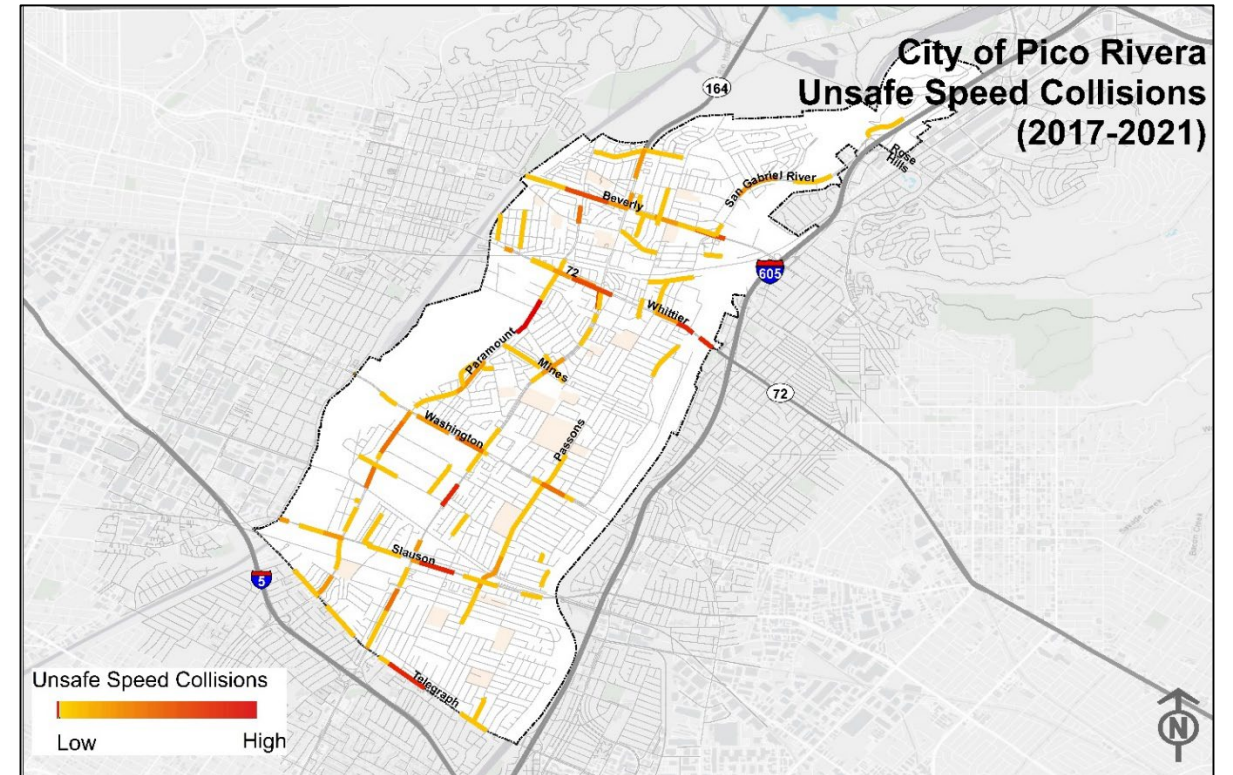


# Geographic Collision Analysis

29% of total collisions were Sideswipe



21% of total collisions were caused by Unsafe speed

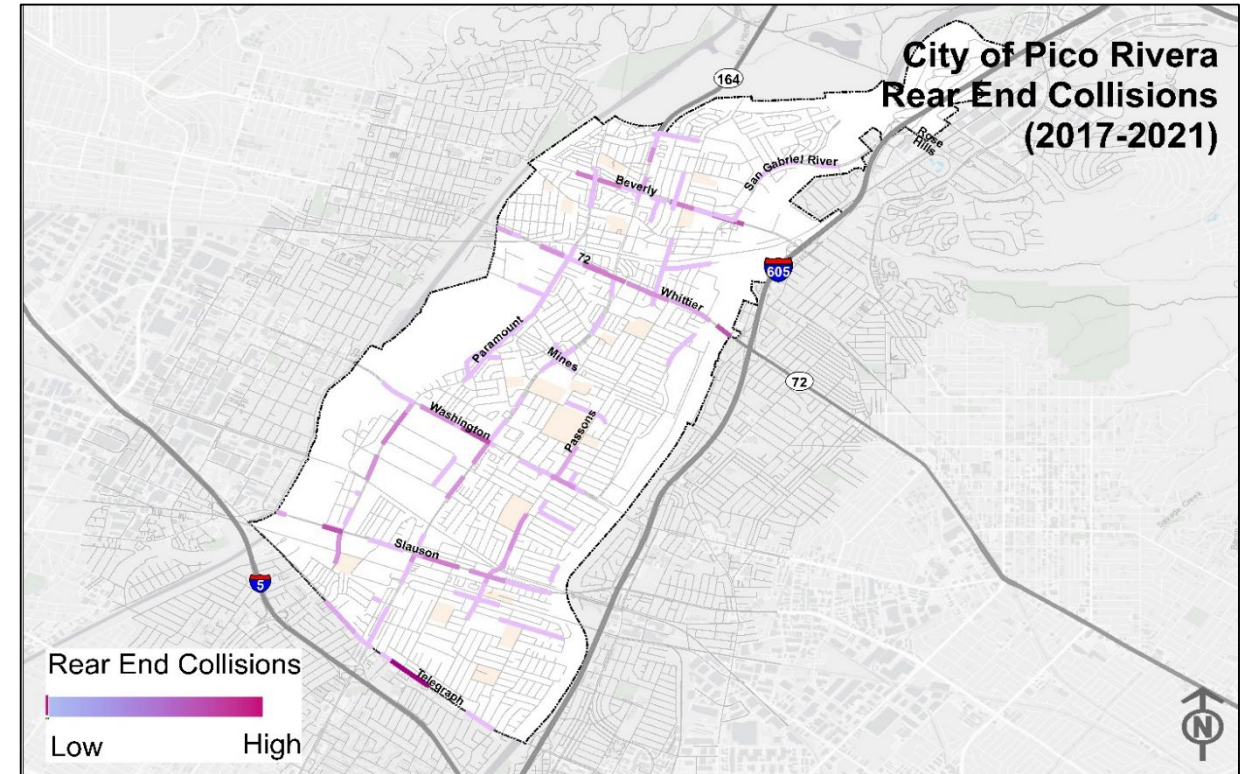
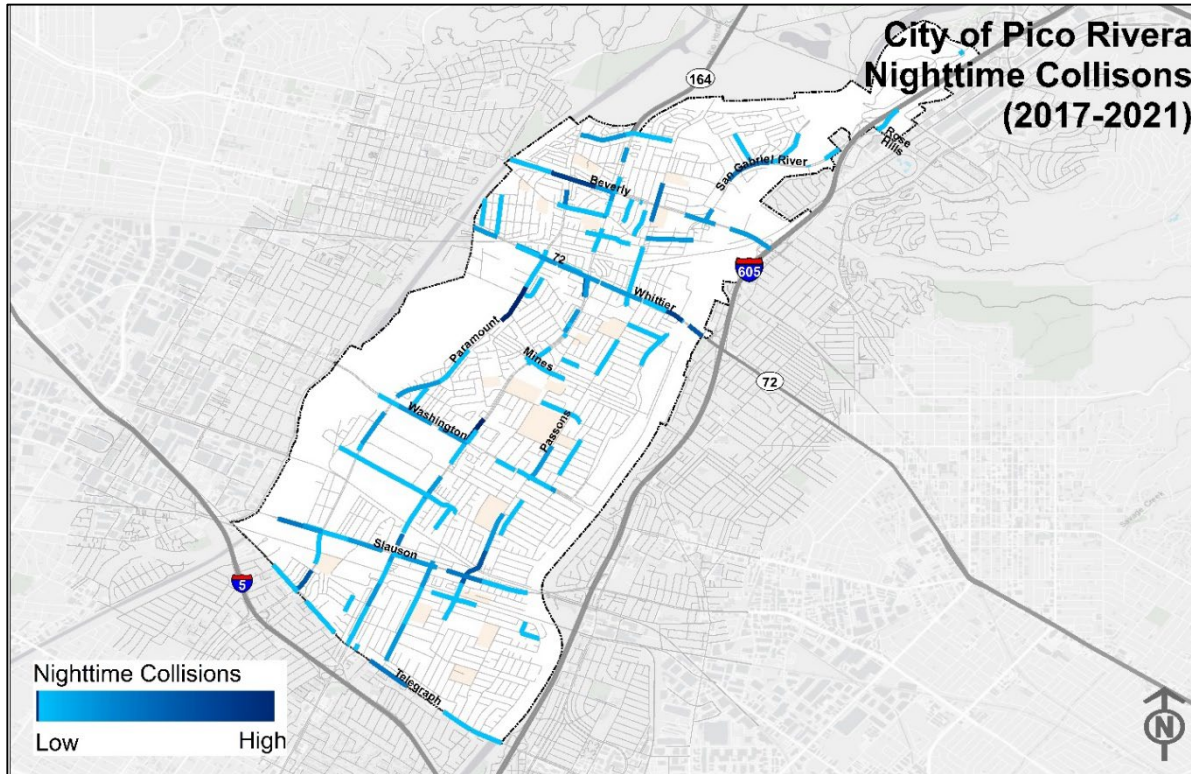




# Geographic Collision Analysis

34% of total collisions occurred at Night

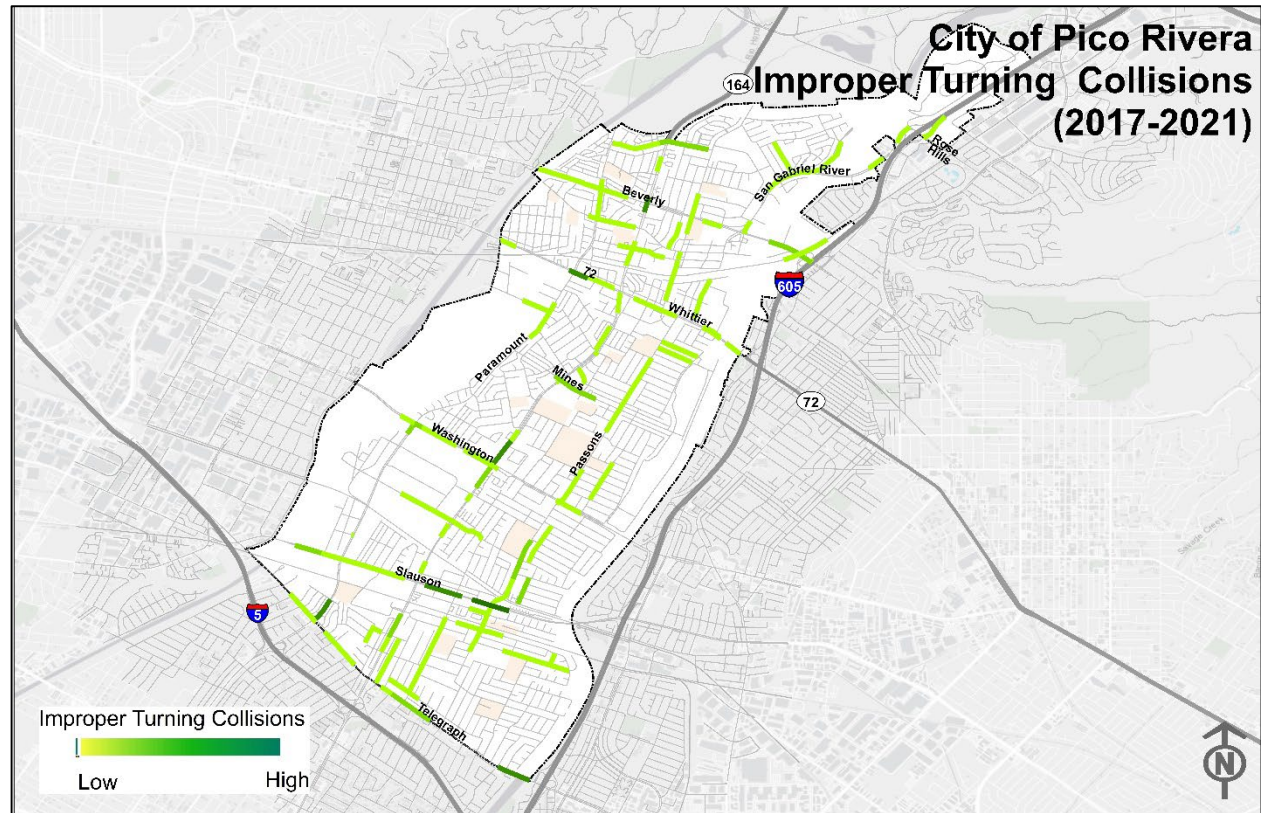
29% of total collision were Rear End





# Geographic Collision Analysis

31% of total collisions were Improper Turning Violations



# Equivalent Property Damage Only (EPDO) Score

Collision Severity	EPDO Score
Fatal and Severe Injury Combined	165
Visible Injury	11
Complaint of Pain	6
Property Damage Only (PDO)	1

EPDO Score =

(165 x # of Fatal Collisions) +

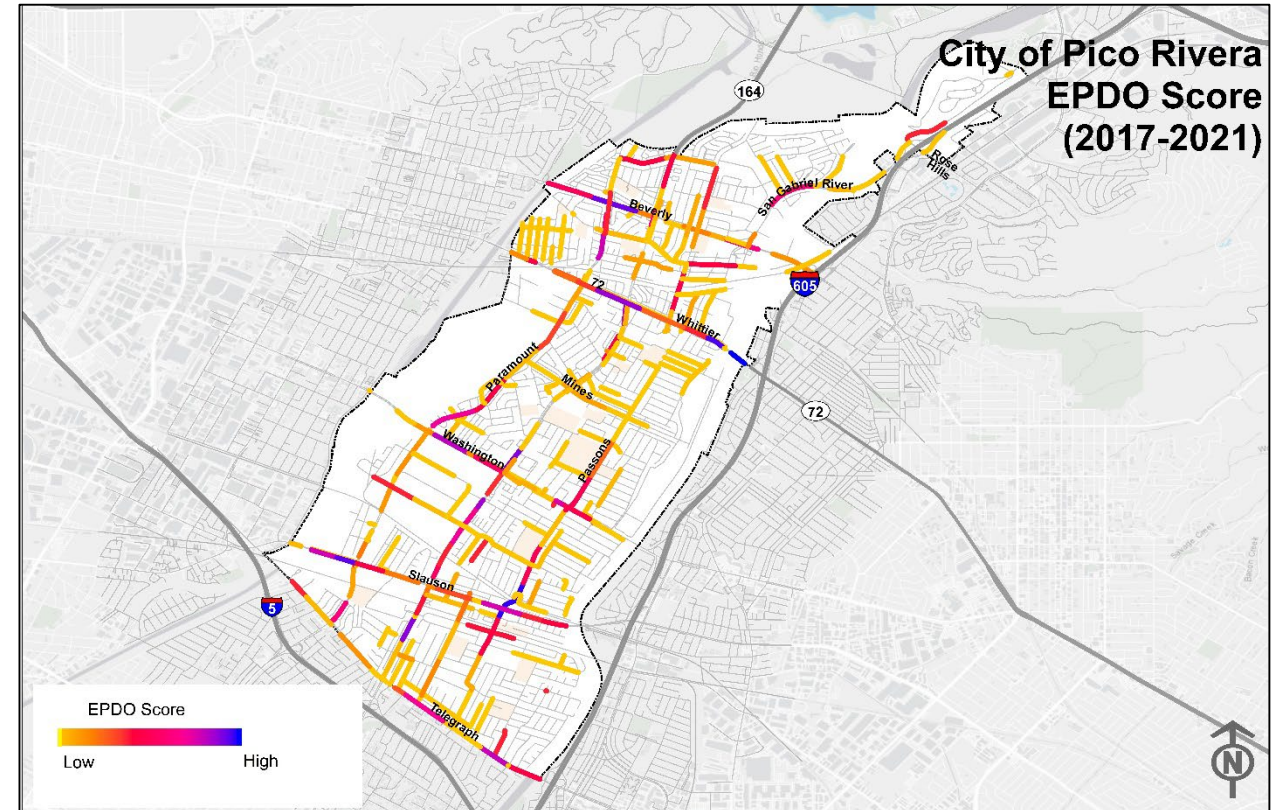
(165 x # of Severe Injury Collisions) +

(11 x # of Other Visible Injury Collisions) +

(6 x # of Complaint of Pain Collisions) +

(1 x # of PDO Collisions)

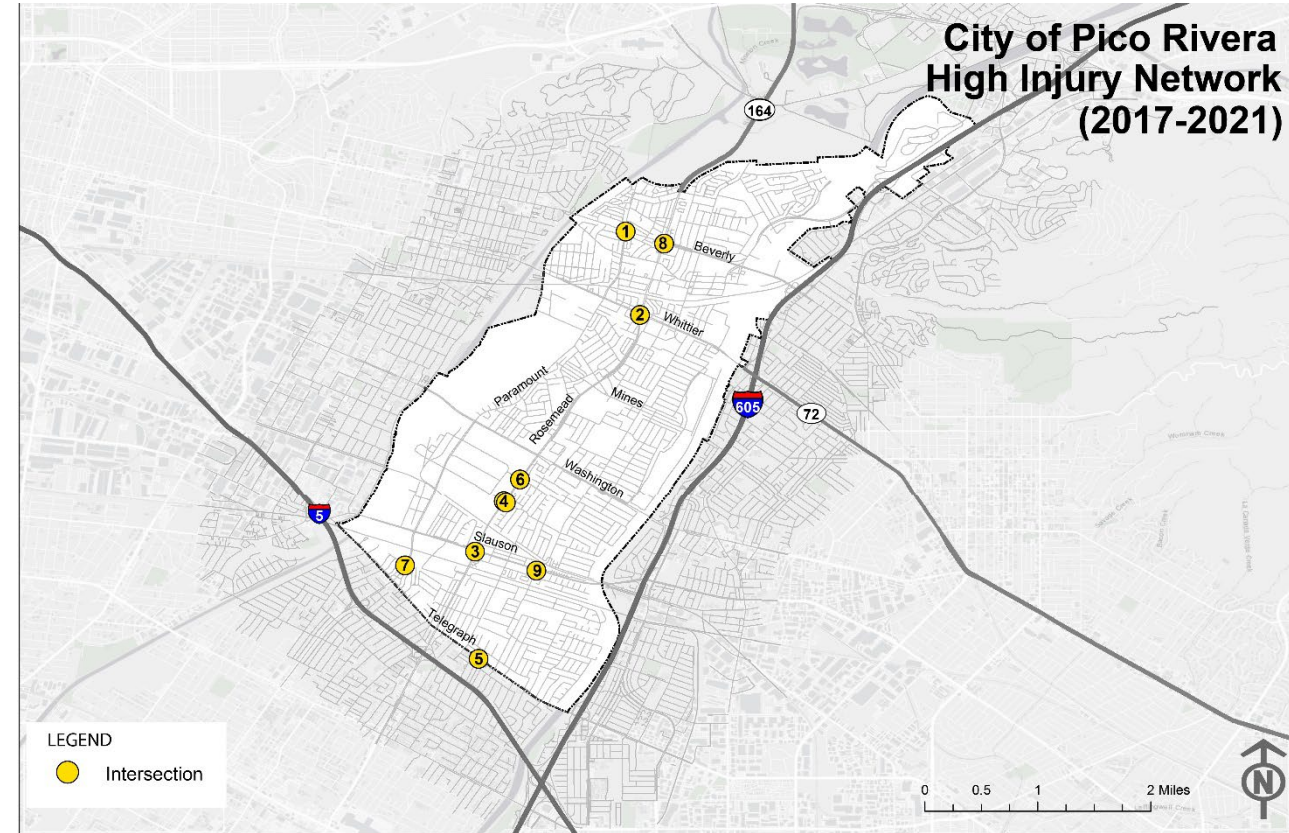
(Source: Local Roadway Safety Manual 2020, Caltrans)





# High-Injury Intersections

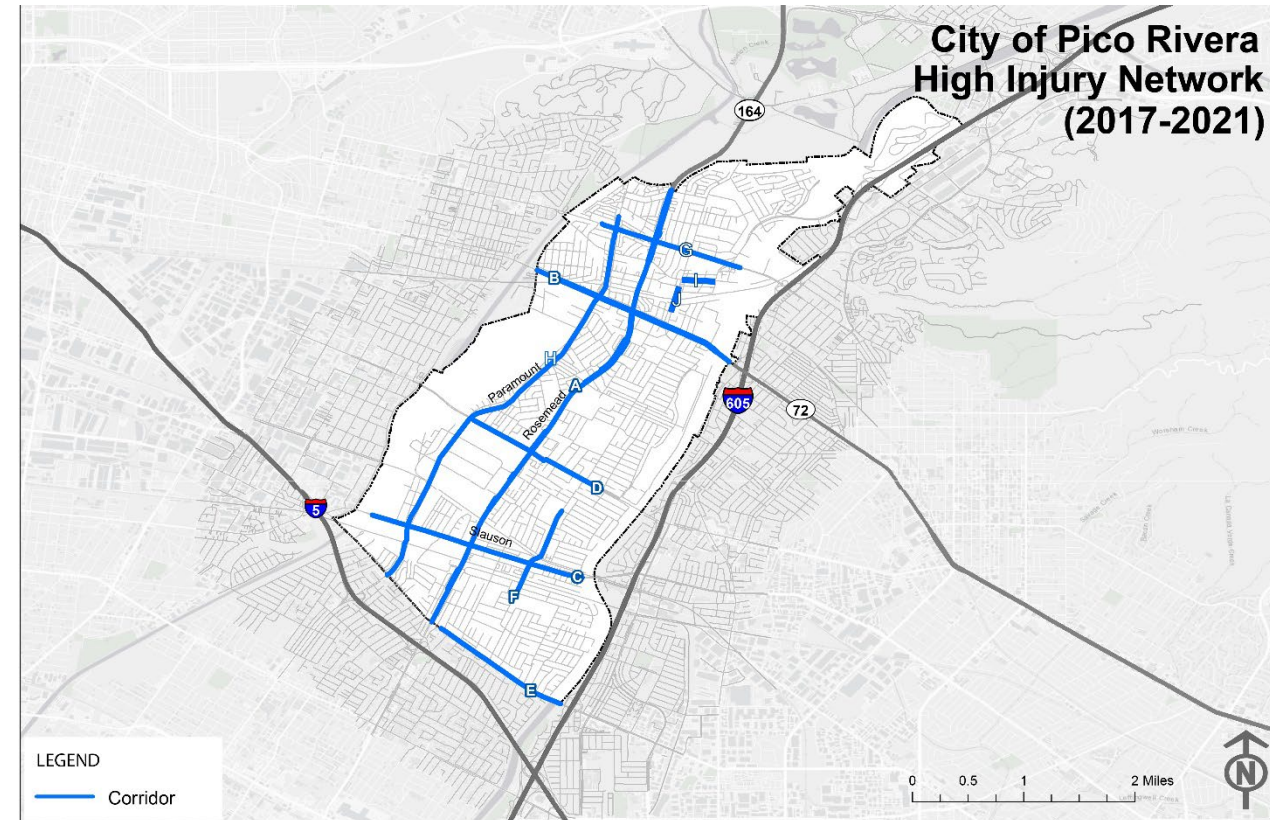
ID	Intersection	Total Injury Collisions	KSI Collisions	Severity Weight
1	Beverly Blvd and Paramount Blvd	18	1	541
2	Rosemead Blvd and Whittier Blvd	10	5	507
3	Slauson Ave and Paramount Blvd	20	2	478
4	Rex Rd and Rosemead Blvd	12	3	415
5	Telegraph Rd and Klinedale Ave	9	1	382
6	Rosemead Blvd and Danbridge St	7	3	365
7	Paramount Blvd and Maxine St	5	1	358
8	Beverly Blvd and Rosemead Blvd	10	1	254
9	Slauson Ave and Passons Blvd	10	3	244





# High-Injury Corridors

ID	Corridor	Total Injury Collisions	KSI Collisions	Length (miles)	Severity Weight
A	Rosemead Blvd: Gallatin Rd to Telegraph Rd	57	18	4.3	2365
B	Whittier Blvd/ SR 72: Van Norman Rd to Esperanza Ave	51	6	1.7	888
C	Slauson Ave: Industry Ave to East City Limit	56	8	1.8	1544
D	Washington Blvd: Paramount Blvd to Millux Avenue	14	8	1.2	591
E	Telegraph Rd: Lexington-Gallatin Rd to East City Limit	28	3	1.1	839
F	Passons Blvd: Homestead St to Foxbury Way	27	3	0.9	654
G	Beverly Blvd: Pine St to San Gabriel River Parkway	30	3	1.2	227
H	Paramount Blvd: Tilmont Avenue and Telegraph Rd	24	6	4.1	820
I	Beverly Rd: Durfee Ave to Beverly Rd towards Manning Rd	5	1	0.3	199
J	Durfee Ave: Speedway to Olympic Blvd	6	1	0.3	205



# Project Website is Live!



## Project Overview

The City of Pico Rivera is developing a comprehensive Local Roadway Safety Plan (LRSP). The LRSP would enable the City to enhance roadway safety for all modes of transportation and for all ages and abilities.

The overarching goal is to develop a successful LRSP by utilizing the historic collision database to create a decision-making process that relies on a partnership with stakeholders and public outreach using the five "E's of traffic safety: Engineering, Enforcement, Equity, Education, and Emergency Medical Services.

Scroll down to view the project area and report your roadway safety concerns in the City of Pico Rivera.

## Collision History

## Explore

[Project Overview](#)

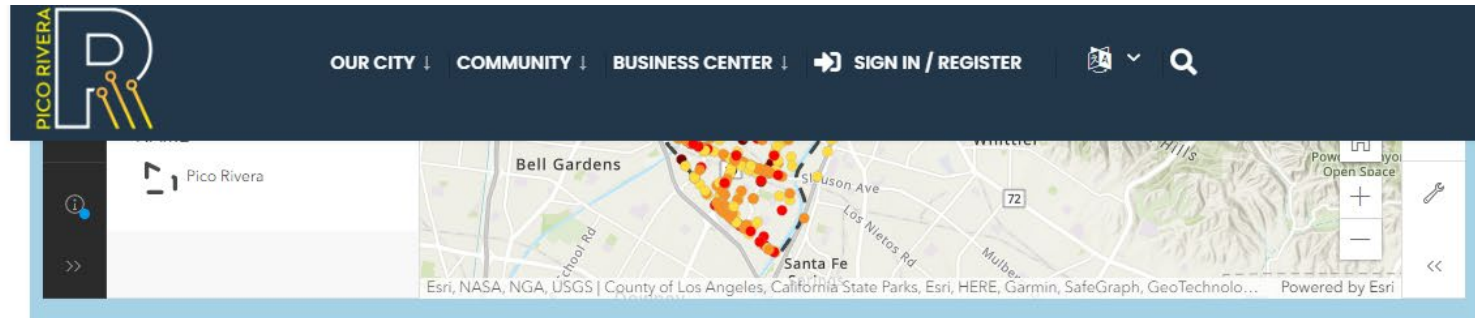
[Project Area](#)

[Collision History](#)

[Project Updates](#)

[Provide Feedback](#)

# Provide Feedback



## Project Updates

6/30/2022: View the Collision History section for collisions of all severity that occurred in the City of Pico Rivera from 2017 to 2021. We are constantly updating the interactive map as the project moves forward.

3/30/2022: Downloadable materials, plans, and reports will be uploaded here when they are available.

## Provide Feedback

Your input is essential for the success of this Local Roadway Safety Plan. Click the button below to provide feedback with your concerns regarding safety and access for all modes, ages, and abilities.

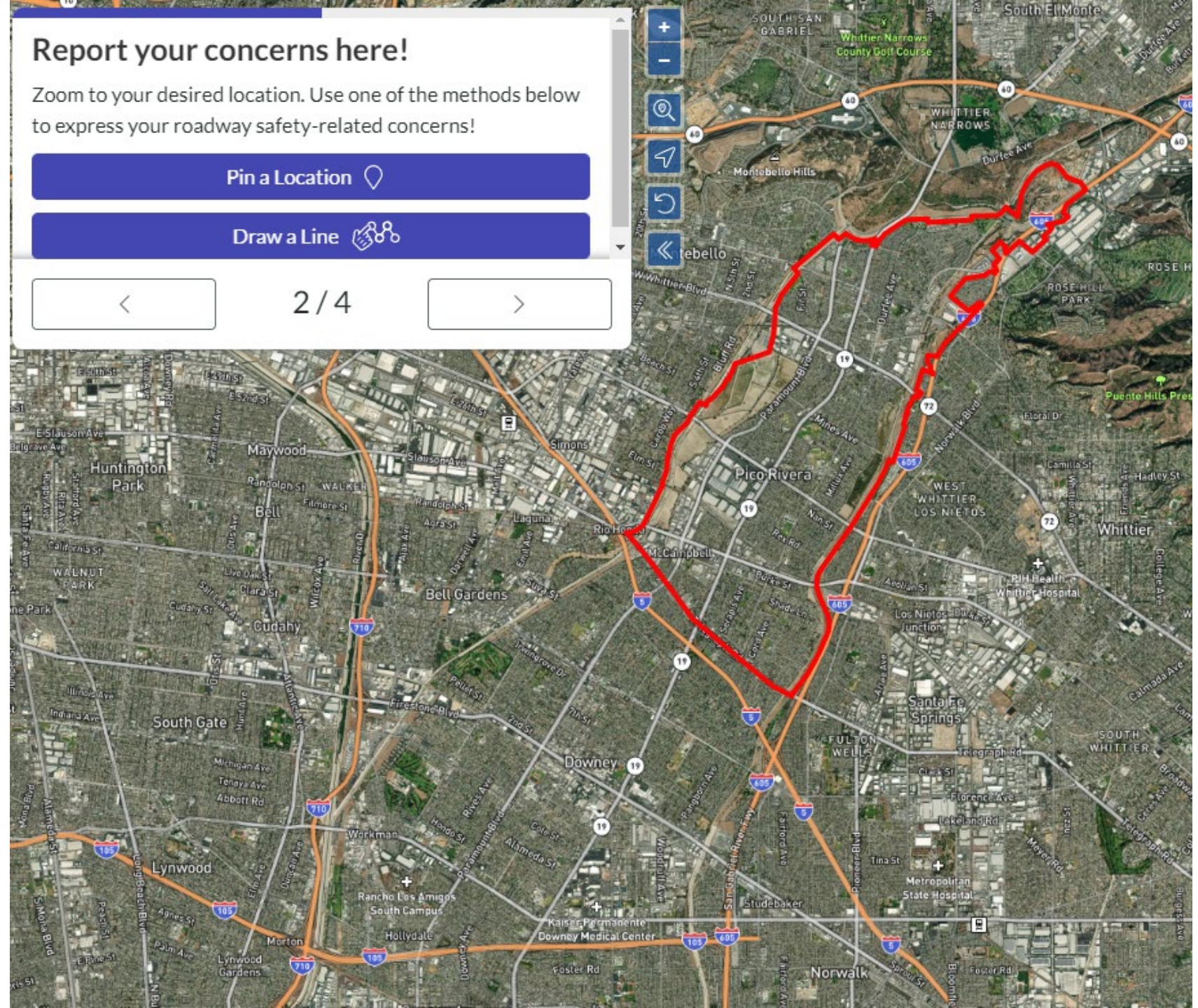
[Report Your Area of Concern](#)

For further updates, check project updates or subscribe to receive notifications.





# Tell us your concerns on the map!





A photograph of a street scene with a 'Dal Rae' sign and palm trees, overlaid with a semi-transparent red banner containing the word 'Discussion'.

# Discussion

# Next Steps

- Summarize stakeholder and public input
- Identify top emphasis areas
- Identify and prioritize engineering countermeasures and non-engineering strategies
- Develop safety projects for all high-injury locations
- Stakeholder Meeting #2

